



Main

Range of product	Altivar Lexium
Product or component type	EMC input filter
Range compatibility	Altivar Machine ATV320 Lexium 28 Altivar 32 Lexium 32
Product compatibility	LXM28A ATV32, 380...500 V, 5...7.5 kW Variable speed drive ATV320 at 5.5 kW, 380...500 V, three phase Variable speed drive ATV320 at 7.5 kW, 380...500 V, three phase Variable speed drive ATV320...W/ATV320...WS at 5.5 kW, 380...500 V, three phase Variable speed drive ATV320...W/ATV320...WS at 7.5 kW, 380...500 V, three phase
Product specific application	Radio interference input filter
Mounting location	Below variable speed drive
Network number of phases	Three phase

Complementary

Maximum cable distance between devices	20 M conforming to IEC 61800-3 category C1 100 M conforming to IEC 61800-3 category C2 150 m conforming to IEC 61800-3 category C3
[In] rated current	47 A
Thermal losses	19.3 W
Network rated voltage	380...500 V
Tolerance	- 15...10 %
Net weight	3.15 kg
Emc filter compatibility	Type 024

Packing Units

Unit Type of Package 1	PCE
Number of Units in Package 1	1
Package 1 Weight	3.01 kg
Package 1 Height	7 cm
Package 1 width	46.8 cm
Package 1 Length	24 cm
Unit Type of Package 2	S06
Number of Units in Package 2	22
Package 2 Weight	80.76 kg
Package 2 Height	73.5 cm
Package 2 width	60 cm
Package 2 Length	80 cm

The information provided in this documentation contains general descriptions and/or technical characteristics of the performance of the products contained herein. This documentation is not intended as a substitute for and is not to be used for determining suitability or reliability of these products for specific user applications. It is the duty of any such user or integrator to perform the appropriate and complete risk analysis, evaluation and testing of the products with respect to the relevant specific application or use thereof. Neither Schneider Electric Industries SAS nor any of its affiliates or subsidiaries shall be responsible or liable for misuse of the information contained herein.

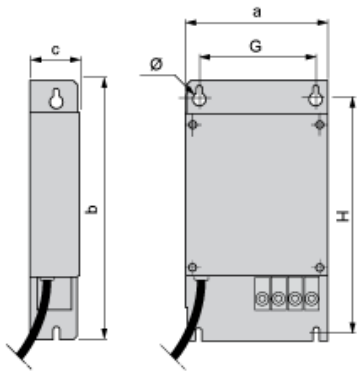
Offer Sustainability

REACH Regulation	REACH Declaration
REACH free of SVHC	Yes
EU RoHS Directive	Pro-active compliance (Product out of EU RoHS legal scope) EU RoHS Declaration
Toxic heavy metal free	Yes
Mercury free	Yes
RoHS exemption information	Yes
China RoHS Regulation	China RoHS Declaration

Contractual warranty

Warranty	18 months
----------	-----------

Additional EMC Input Filters



Dimensions in mm

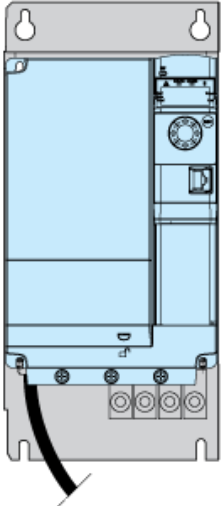
a	b	c	G	H	Ø
180	305	60	140	285	5.5

Dimensions in in.

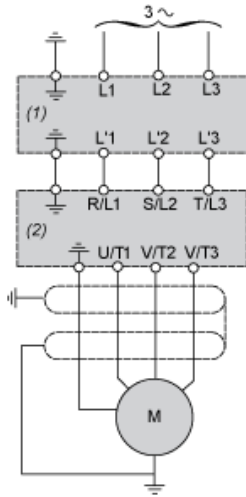
a	b	c	G	H	Ø
7.09	12.01	2.36	5.51	11.22	0.22

Mounting Recommendations

Mounting the Filter behind the Drive



Recommended Schema



- (1) Filter
- (2) Drive