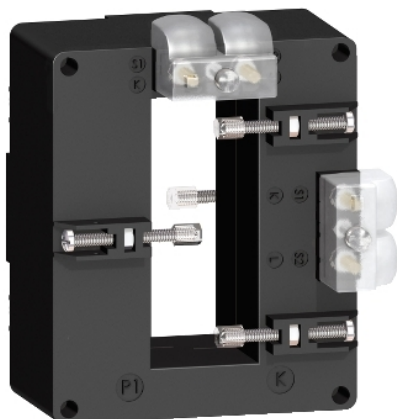


METSECT5DD150

current transformer tropicalised 1500 5 double
output for bars 34x84



Main

Range	PowerLogic
Product name	CT
Product or component type	Current transformer
Secondary current	5 A
Accuracy class	Class 0.5 at 15 VA Class 1 at 20 VA
[In] rated current	1500 A

Complementary

Current transformer type	Tropicalised for busbar
Current transformer ratio	1500/5
[Ith] conventional free air thermal current	60 kA
Dynamic withstand current	2.5 Ith
Maximum safety factor	5
[Ue] rated operational voltage	< 720 V AC 50/60 Hz
[Ui] rated insulation voltage	3 kV
Mounting mode	Insulated locking screw
Mounting support	Busbar
Width	96 Mm outside: 35 mm inner:
Height	116 Mm outside: 84 mm inner:
Depth	40 Mm frame: 78.4 mm total:
Net weight	0.676 kg
[Uimp] rated impulse withstand voltage	3 kV
Electrical insulation class	Class B
Opening of bars	84 x 34
Sealing	With

Environment

Standards	VDE 0414 IEC 61869-2
Product certifications	EAC CE
IP degree of protection	IP20
Relative humidity	0...95 %
Ambient air temperature for operation	-25...50 °C

The information provided in this documentation contains general descriptions and/or technical characteristics of the performance of the products contained herein. This documentation is not intended as a substitute for and is not to be used for determining suitability or reliability of these products for specific user applications. It is the duty of any such user or integrator to perform the appropriate and complete risk analysis, evaluation and testing of the products with respect to the relevant specific application or use thereof. Neither Schneider Electric Industries SAS nor any of its affiliates or subsidiaries shall be responsible or liable for misuse of the information contained herein.

Packing Units

Unit Type of Package 1	PCE
Number of Units in Package 1	1
Package 1 Weight	650 g
Package 1 Height	10.5 cm
Package 1 width	10.5 cm
Package 1 Length	14 cm
Unit Type of Package 2	S03
Number of Units in Package 2	12
Package 2 Weight	8.245 kg
Package 2 Height	30 cm
Package 2 width	30 cm
Package 2 Length	40 cm

Offer Sustainability

EU RoHS Directive	Compliant EU RoHS Declaration
China RoHS Regulation	China RoHS Declaration
Environmental Disclosure	Product Environmental Profile
Circularity Profile	End Of Life Information
WEEE	The product must be disposed on European Union markets following specific waste collection and never end up in rubbish bins