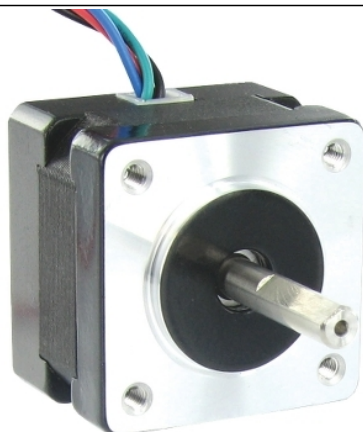


## BRS2361A070

2-phase stepper motor - 0.07 N.m - shaft  $\varnothing 5$  mm - L=26mm - without brake - 0.75A



### Main

Range compatibility	Lexium SD2
Product or component type	Motion control motor
Device short name	BRS2
Motor type	2-phase stepper motor

### Complementary

Maximum mechanical speed	2700 rpm
Supply voltage limits	12...48 V DC
Mounting support	Flange
Motor flange size	35.3 mm
Length	26 mm
Number of motor stacks	1
Centring collar diameter	22 mm
Centring collar depth	2 mm
Number of mounting holes	4
Mounting holes diameter	3 mm
Circle diameter of the mounting holes	36.77 mm
Electrical connection	Flying lead
Holding brake	Without
Shaft end	Smooth shaft
Second shaft	Without second shaft end
Shaft diameter	5 mm
Shaft length	22 mm
Holding torque	0.07 N.m
Rotor inertia	0.012 kg.cm <sup>2</sup>
Resolution	200 steps number of full steps per revolution 1.8 ° step angle
[In] rated current	0.75 A
Resistance	4.3 Ohm (winding)

### Environment

Ambient air temperature for operation	-25...40 °C
Ambient air temperature for storage	-25...70 °C
Operating altitude	<= 1000 m without power derating
Relative humidity	15...85 % without condensation
IP degree of protection	IP20 conforming to IEC/EN 60034-1
Temperature class	B winding conforming to IEC/EN 60034-1

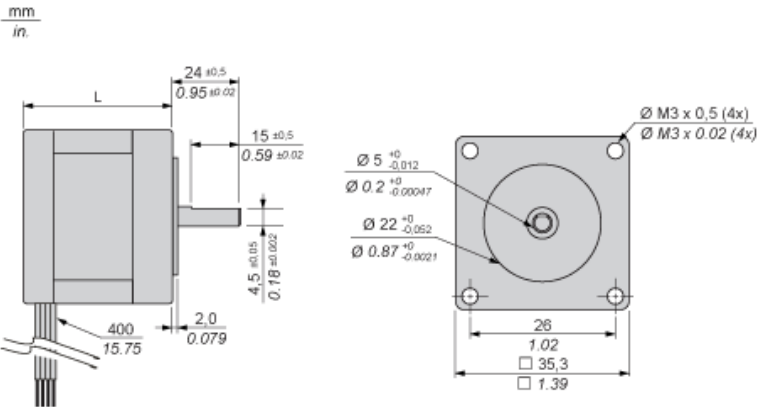
## Packing Units

Unit Type of Package 1	PCE
Number of Units in Package 1	1
Package 1 Height	20 cm
Package 1 Width	25.4 cm
Package 1 Length	32.5 cm
Package 1 Weight	150 g
Unit Type of Package 2	CAR
Number of Units in Package 2	24
Package 2 Height	20 cm
Package 2 Width	25.4 cm
Package 2 Length	32.5 cm
Package 2 Weight	3.619 kg
Unit Type of Package 3	S06
Number of Units in Package 3	192
Package 3 Height	73.5 cm
Package 3 Width	60 cm
Package 3 Length	80 cm
Package 3 Weight	41.952 kg

## Contractual warranty

Warranty	18 months
----------	-----------

Dimensions



Dimensions in mm

L
26

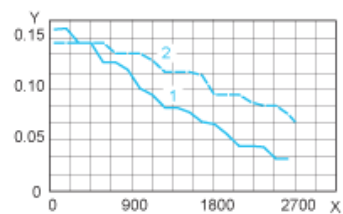
Dimensions in in.

L
1.02

---

Torque Characteristics

---



X : Speed of rotation in rpm  
Y : Torque in Nm  
1 : 24 VDC  
2 : 48 VDC