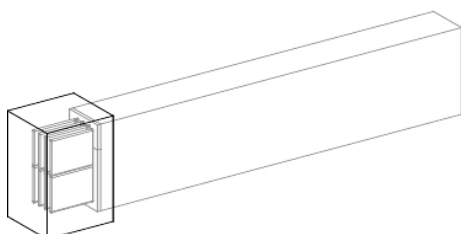


KRB0130FA10

End cover, Canalis KR, for run component, 1250A for Canalis KRA, 1600A for Canalis KRC, 3 or 4 conductors



Main

| | |
|---|---|
| Range | Canalis |
| Product name | KR |
| Product or component type | End cover |
| Device short name | KRB |
| Range compatibility | Canalis KR KRA[RETURN]Canalis KR KRC |
| Accessory / separate part category | Trunking accessory |
| Device application | Joining |
| [I _e] rated operational current | 1250 A with aluminium 1600 A with copper |
| Busbar trunking polarity | 3L 3L + N or 3L + PE or 3L + PEN |
| Length | 150 mm |

Complementary



| | |
|-------------------|----------------------------|
| Mounting location | Side of trunking |
| Mounting mode | By screws |
| Mounting support | Trunking |
| Standards | IEC 61439-2 IEC 61439-6 |
| Offer type | Spare part |
| Width | 140 mm |
| Height | 170 mm |
| Colour | Grey (RAL 7030) |
| Quantity per set | Set of 1 |

Packing Units

| | |
|------------------------------|---------|
| Unit Type of Package 1 | PCE |
| Number of Units in Package 1 | 1 |
| Package 1 Height | 13.0 cm |
| Package 1 Width | 10.0 cm |
| Package 1 Length | 15.0 cm |
| Package 1 Weight | 5.36 kg |

Offer Sustainability

| | |
|----------------------------|---|
| Sustainable offer status | Green Premium product |
| REACH Regulation | REACH Declaration |
| REACH free of SVHC | Yes |
| EU RoHS Directive | Compliant EU RoHS Declaration |
| Toxic heavy metal free | Yes |
| Mercury free | Yes |
| China RoHS Regulation | China RoHS Declaration |
| RoHS exemption information | Yes |

| | |
|-----------------------------|--|
| Environmental Disclosure |  Product Environmental Profile |
| Circularity Profile |  End Of Life Information |
| WEEE | The product must be disposed on European Union markets following specific waste collection and never end up in rubbish bins |
| Halogen content performance | Halogen free product |