

Main

| | |
|---------------------------|-------------|
| Range compatibility | PacDrive 3 |
| Device short name | SH3.....P |
| Product or component type | Servo motor |

Complementary





| | |
|---------------------------|--|
| Maximum mechanical speed | 6000 rpm |
| [Us] rated supply voltage | 115...480 V |
| Network number of phases | Three phase |
| Continuous stall current | 3.5 A |
| Continuous stall torque | 2.94 N.m at 115...480 V three phase |
| Continuous power | 1190 W |
| Peak stall torque | 9.6 N.m at 115...480 V three phase |
| Nominal output power | 690 W at 230 V single phase 1190 W at 400 V three phase 1190 W at 480 V three phase |
| Nominal torque | 2.64 N.M at 230 V single phase 2.27 N.M at 400 V three phase 2.27 N.m at 480 V three phase |
| Nominal speed | 2500 rpm at 230 V single phase 5000 rpm at 400 V three phase 6000 rpm at 480 V three phase |
| Maximum current Irms | 12 A |
| Shaft end | Parallel key |
| Shaft diameter | 19 mm |
| Shaft length | 40 mm |
| Key width | 6 mm |
| IP degree of protection | IP65 motor: conforming to EN/IEC 60034-5 IP54 shaft bushing without shaft seal ring: conforming to EN/IEC 60034-5 |
| Encoder type | Absolute single turn Hiperface DSL |
| Speed feedback resolution | 262144 points/turn |
| Holding brake | With |
| Holding torque | 9 N.m |
| Mounting support | International standard flange |
| Motor flange size | 100 mm |
| Electrical connection | Straight connector |
| Torque constant | 0.84 N.m/A at 120 °C |
| Back emf constant | 60 V/krpm at 20 °C |
| Number of motor poles | 4 |
| Rotor inertia | 2.018 kg.cm ² |
| Stator resistance | 3.8 Ohm |

| | |
|---------------------------------------|--|
| Stator inductance | 19 mH |
| Maximum radial force Fr | 1340 N at 3000 rpm 1930 N at 1000 rpm 1530 N at 2000 rpm |
| Maximum axial force Fa | 300 N |
| Brake pull-in power | 12 W |
| Type of cooling | Natural convection |
| Length | 199.5 mm |
| Centring collar diameter | 95 mm |
| Centring collar depth | 3.5 mm |
| Number of mounting holes | 4 |
| Mounting holes diameter | 9.0 mm |
| Circle diameter of the mounting holes | 115 mm |
| Net weight | 5.0 kg |

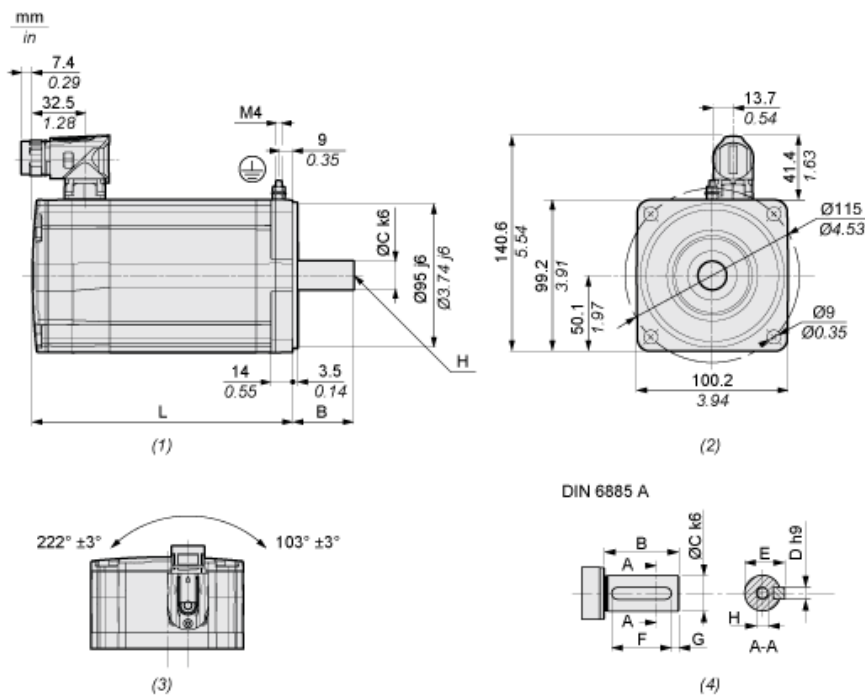
Packing Units

| | |
|------------------------------|---------|
| Unit Type of Package 1 | PCE |
| Number of Units in Package 1 | 1 |
| Package 1 Height | 21.0 cm |
| Package 1 Width | 18.0 cm |
| Package 1 Length | 35.6 cm |
| Package 1 Weight | 5.7 kg |

Offer Sustainability

| | |
|----------------------------|---|
| Sustainable offer status | Green Premium product |
| REACH Regulation |  REACH Declaration |
| EU RoHS Directive | Pro-active compliance (Product out of EU RoHS legal scope) |
| Mercury free | Yes |
| China RoHS Regulation |  China RoHS Declaration |
| RoHS exemption information |  Yes |
| Environmental Disclosure |  Product Environmental Profile |
| Circularity Profile | No need of specific recycling operations |
| WEEE | The product must be disposed on European Union markets following specific waste collection and never end up in rubbish bins |
| PVC free | Yes |

Dimensions



- (1) : Side view
(2) : Mounting
(3) : Rotating area
(4) : Feather key

| Characteristic | | Unit | Value |
|----------------|------------------------------------|---------|------------------|
| L | Length with holding brake | mm (in) | 199.5 (7.85) |
| B | Shaft length | mm (in) | 40 (1.57) |
| C | Shaft diameter | mm (in) | 19 (0.75) |
| D | Width of parallel key | mm (in) | 6 (0.24) |
| E | Shaft width with parallel key | mm (in) | 21.5 (0.85) |
| F | Length of parallel key | mm (in) | 30 (1.18) |
| G | Distance parallel key to shaft end | mm (in) | 5 (0.2) |
| H | Female thread of shaft | | DIN 332-D M6 |
| | Parallel key | | DIN 6885-A6x6x30 |