

Main

Range of product	Lexium linear motion
Product or component type	T-slot nut
Product specific application	To mount the axis on fixed support
Accessory / separate part category	Maintenance accessories
Screw type	M5

Complementary

Product compatibility	PAS 41 linear axis, outer dimension : 40 x 40 mm PAS 42 linear axis, outer dimension : 60 x 60 mm CAS 41 linear axis, outer dimension : 40 x 40 mm CAS 42 linear axis, outer dimension : 60 x 60 mm TAS 41 linear axis, outer dimension : 100 x 39 mm
Range compatibility	Lexium CAS Lexium PAS Lexium TAS
Width	5 mm

Packing Units

Unit Type of Package 1	PCE
Number of Units in Package 1	1
Package 1 Height	6.5 cm
Package 1 Width	13.0 cm
Package 1 Length	19.0 cm
Package 1 Weight	94.0 g
Unit Type of Package 2	S04
Number of Units in Package 2	34
Package 2 Height	30.0 cm
Package 2 Width	40.0 cm
Package 2 Length	60.0 cm
Package 2 Weight	4.042 kg

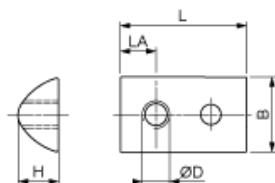
Offer Sustainability

REACH Regulation	REACH Declaration
REACH free of SVHC	Yes
EU RoHS Directive	Pro-active compliance (Product out of EU RoHS legal scope) EU RoHS Declaration
Toxic heavy metal free	Yes
Mercury free	Yes
China RoHS Regulation	China RoHS Declaration
RoHS exemption information	Yes
PVC free	Yes

Contractual warranty

Warranty	18 months
----------	-----------

Dimensions



Dimensions in mm

B	H	L	LA	ØD
8	4	11.5	4	M5

Dimensions in in.

B	H	L	LA	ØD
0.31	0.16	0.45	0.16	M5