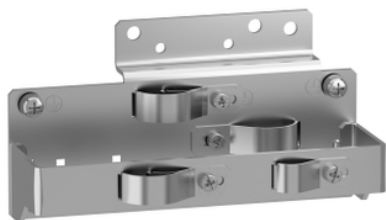


Product data sheet

Characteristics

VW3A47802

Altivar Easy 610, Altivar Process ATV600,
Altivar Process ATV900, EMC plate, 7.5
kW...11 kW



Main

Range of product	Altivar Easy 610 Altivar Process ATV600 Altivar Process ATV900
Accessory / separate part type	Mounting plate
Accessory / separate part category	Mounting and fixing accessory
Product compatibility	ATV610 variable speed drive 11 kW motor[RETURN]ATV610 variable speed drive 7.5 kW motor[RETURN]ATV630 variable speed drive 11 kW motor[RETURN]ATV630 variable speed drive 7.5 kW motor[RETURN]ATV930 variable speed drive 11 kW motor[RETURN]ATV930 variable speed drive 7.5 kW motor
Accessory / separate part destination	Variable speed drive

Complementary

Kit composition	Screws 1 EMC plate bottom 1 EMC plate top clamps
Net weight	0.43 kg

Packing Units

Unit Type of Package 1	PCE
Number of Units in Package 1	1
Package 1 Height	7.62 cm
Package 1 Width	17.78 cm
Package 1 Length	23.37 cm
Package 1 Weight	0.48 kg
Unit Type of Package 2	S04
Number of Units in Package 2	16
Package 2 Height	30 cm
Package 2 Width	40 cm
Package 2 Length	60 cm
Package 2 Weight	8.798 kg

Offer Sustainability

REACH Regulation	REACH Declaration
REACH free of SVHC	Yes
EU RoHS Directive	Pro-active compliance (Product out of EU RoHS legal scope) EU RoHS Declaration
Toxic heavy metal free	Yes
Mercury free	Yes
China RoHS Regulation	China RoHS Declaration
RoHS exemption information	Yes