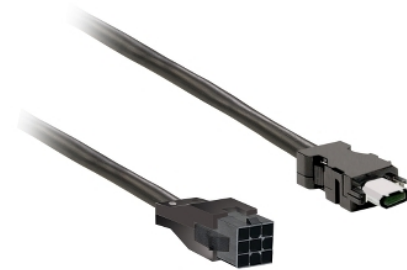


Product data sheet

Characteristics

VW3M5D1FR50

power cable 5m shielded 4x 0,82mm², BCH2
brake leads connection



Main

Range of product	Lexium 28
Product or component type	Power cable
Accessory / separate part type	Preassembled power cordset
Accessory / separate part category	Connection accessory
Product compatibility	Servo motor BCH2 at 50 W (40 mm) (with brake) Servo motor BCH2 at 100 W (40 mm) (with brake) Servo motor BCH2 at 200 W (60 mm) (with brake) Servo motor BCH2 at 400 W (60 mm) (with brake) Servo motor BCH2 at 400 W (80 mm) (with brake) Servo motor BCH2 at 750 W (80 mm) (with brake)
Accessory / separate part destination	Between servo motor and servo drive
Range compatibility	Lexium 28
Cable length	5 m

Complementary

Electrical connection	Free end for servo drive side Connector - Molex 6-pin for servo motor side
AWG gauge	6 x AWG 18
Net weight	0.45 kg

Packing Units

Unit Type of Package 1	PCE
Number of Units in Package 1	1
Package 1 Height	4 cm
Package 1 Width	33 cm
Package 1 Length	36 cm
Package 1 Weight	864 g
Unit Type of Package 2	S02
Number of Units in Package 2	4
Package 2 Height	15 cm
Package 2 Width	30 cm
Package 2 Length	40 cm
Package 2 Weight	3.76 kg

Offer Sustainability

REACH Regulation	REACH Declaration
REACH free of SVHC	Yes
EU RoHS Directive	Pro-active compliance (Product out of EU RoHS legal scope) EU RoHS Declaration
Toxic heavy metal free	Yes
Mercury free	Yes
China RoHS Regulation	China RoHS Declaration
RoHS exemption information	Yes
PVC free	Yes