



### Main

Range of product	Modicon X80
Product or component type	Discrete input module
Discrete input number	8
Discrete input type	Isolated
Input type	Capacitive
Discrete input voltage	200...240 V AC
Discrete input current	10.4 mA

### Complementary

Input compatibility	With 2-wire/3-wire proximity sensors conforming to IEC 60947-5-2 With 2-wire/3-wire proximity sensors conforming to IEC 61131-2 Type 2
Network frequency	50/60 Hz
Network frequency limits	47...63 Hz
Sensor power supply	170...264 V
Current state 1 guaranteed	$\geq 6$ mA
Current state 0 guaranteed	$\leq 4$ mA
Input impedance	21000 Ohm
Insulation resistance	$> 10$ MOhm 500 V DC
Power dissipation in W	4.73 W
AC activation response time	10 ms
AC deactivation response time	20 ms
Typical current consumption	76 mA at 3.3 V DC 93.6 mA at 24 V DC
Current consumption	$\leq 126$ mA at 3.3 V DC $\leq 154.8$ mA at 24 V DC
Protection type	1 external fuse per group of channel 0.5 A fast blow
Voltage detection threshold	$> 164$ V AC sensor OK $< 80$ V AC sensor fault
Status LED	1 LED (green) module operating (RUN) 1 LED per channel (green) channel diagnostic 1 LED (red) module error (ERR) 1 LED (red) module I/O
Net weight	0.12 kg

### Environment

IP degree of protection	IP20
Directives	2014/35/EU - low voltage directive 2014/30/EU - electromagnetic compatibility
Dielectric strength	1500 V AC at 50/60 Hz 1 min
Vibration resistance	3 gn
Shock resistance	30 gn
Ambient air temperature for storage	-40...85 °C
Ambient air temperature for operation	0...60 °C

Relative humidity	5...95 % at 55 °C without condensation
Operating altitude	0...2000 m 2000...5000 m with derating factor

## Packing Units

Unit Type of Package 1	PCE
Number of Units in Package 1	1
Package 1 Weight	160 g
Package 1 Height	5.5 cm
Package 1 width	11.8 cm
Package 1 Length	11.8 cm
Unit Type of Package 2	S02
Number of Units in Package 2	15
Package 2 Weight	2.7 kg
Package 2 Height	15 cm
Package 2 width	30 cm
Package 2 Length	40 cm

## Offer Sustainability

Sustainable offer status	Green Premium product
REACH Regulation	<a href="#">REACH Declaration</a>
REACH free of SVHC	Yes
EU RoHS Directive	Pro-active compliance (Product out of EU RoHS legal scope) <a href="#">EU RoHS Declaration</a>
Mercury free	Yes
RoHS exemption information	<a href="#">Yes</a>
China RoHS Regulation	<a href="#">China RoHS Declaration</a>
Environmental Disclosure	<a href="#">Product Environmental Profile</a>
Circularity Profile	<a href="#">End Of Life Information</a>
WEEE	The product must be disposed on European Union markets following specific waste collection and never end up in rubbish bins

## Contractual warranty

Warranty	18 months
----------	-----------

## Modules Mounted on Racks

### Dimensions

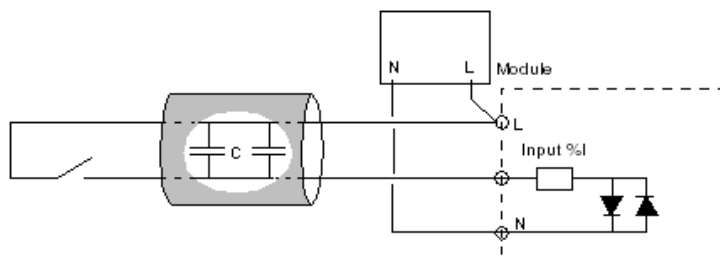


- (1) With removable terminal block (cage, screw or spring).  
 (2) With FCN connector.  
 (3) On AM1 ED rail: 35 mm wide, 15 mm deep. Only possible with BMXXBP0400/0400H/0600/0600H/0800/0800H rack.

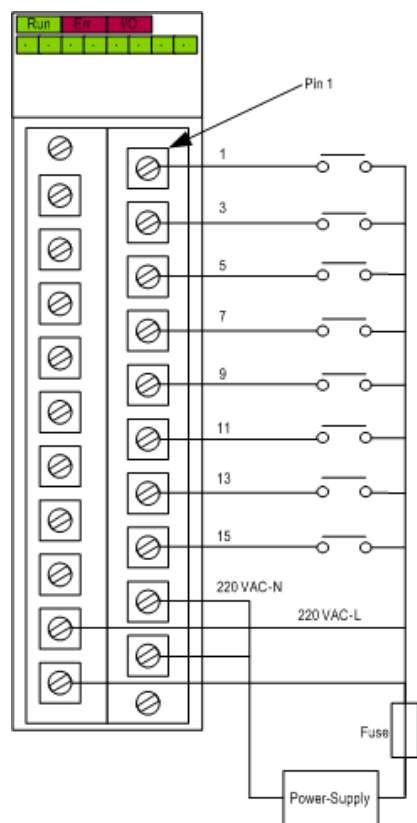
Rack references	a in mm	a in in.
BMXXBP0400 and BMXXBP0400H	242.4	09.54
BMXXBP0600 and BMXXBP0600H	307.6	12.11
BMXXBP0800 and BMXXBP0800H	372.8	14.68
BMXXBP1200 and BMXXBP1200H	503.2	19.81

## Connecting the Module

### Input Circuit Diagram



### Module Connection



power 200...240 VAC  
supply  
fuse fast blow fuse of 0.5 A