

## ZB5FJ8C0

Harmony XB5, Flush mounted selector switch head, plastic, black, Ø30, long handle, 3 positions, spring return right to center, grey bezel



### Main

|                                 |                               |
|---------------------------------|-------------------------------|
| Range of product                | Harmony XB5                   |
| Product or component type       | Head for selector switch      |
| Device short name               | ZB5                           |
| Bezel material                  | Plastic colour plated grey    |
| Mounting diameter               | 30 mm                         |
| Head type                       | Built-in-flush                |
| Sale per indivisible quantity   | 1                             |
| Shape of signaling unit head    | Round                         |
| Type of operator                | Right to centre spring return |
| Operator profile                | Black long handle             |
| Operator additional information | Non padlockable               |
| Operator position information   | 3 positions +/- 45°           |

### Complementary

|                             |   |
|-----------------------------|---|
| CAD overall width           | 37 mm   |
| CAD overall height          | 37 mm   |
| CAD overall depth           | 46 mm   |
| Net weight                  | 0.031 kg  |
| Mechanical durability       | 1000000 cycles  |
| Electrical composition code | C3 for <6 contacts using single blocks in front mounting<br>C4 for <6 contacts using single and double blocks in front mounting<br>C5 for <5 contacts using single blocks in front mounting<br>C6 for <5 contacts using single and double blocks in front mounting<br>C7 for <4 contacts using single blocks in front mounting<br>C8 for <4 contacts using single and double blocks in front mounting<br>C11 for <3 contacts using single blocks in front mounting<br>SF1 for <3 contacts using single blocks in front mounting |
| Device presentation         | Basic element   |

### Environment

|                                       |  |
|---------------------------------------|--|
| Protective treatment                  | TH   |
| Ambient air temperature for storage   | -40...70 °C  |
| Ambient air temperature for operation | -40...70 °C  |
| Overvoltage category                  | Class II conforming to IEC 60536                             |
| IP degree of protection               | IP66 conforming to IEC 60529<br>IP67 conforming to IEC 60529 |
| NEMA degree of protection             | NEMA 13<br>NEMA 4X   |
| Resistance to high pressure washer    | 7000000 Pa at 55 °C, distance : 0.1 m                        |
| IK degree of protection               | IK03 conforming to IEC 50102                                 |

The information provided in this documentation contains general descriptions and/or technical characteristics of the performance of the products contained herein. This documentation is not intended as a substitute for and is not to be used for determining suitability or reliability of these products for specific user applications. It is the duty of any such user or integrator to perform the appropriate and complete risk analysis, evaluation and testing of the products with respect to the relevant specific application or use thereof. Neither Schneider Electric Industries SAS nor any of its affiliates or subsidiaries shall be responsible or liable for misuse of the information contained herein.

|                        |  |
|------------------------|--|
| Standards              | JIS C8201-5-1<br>CSA C22.2 No 14<br>EN/IEC 60947-5-4<br>UL 508<br>EN/IEC 60947-1<br>EN/IEC 60947-5-1<br>JIS C8201-1  |
| Product certifications | CSA<br>GL<br>UL listed<br>BV<br>RINA<br>DNV<br>LROS (Lloyds register of shipping)  |
| Vibration resistance   | 5 gn (f= 2...500 Hz) conforming to IEC 60068-2-6   |
| Shock resistance       | 30 gn (duration = 18 ms) for half sine wave acceleration conforming to IEC 60068-2-27<br>50 gn (duration = 11 ms) for half sine wave acceleration conforming to IEC 60068-2-27 |

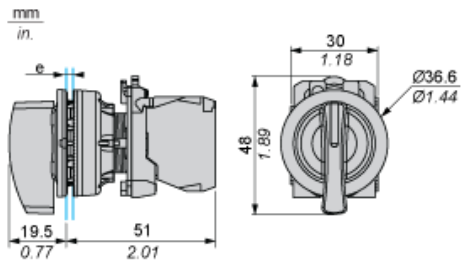
## Packing Units

|                  |          |
|------------------|----------|
| Package 1 Weight | 22.000 g |
| Package 1 Height | 5.450 cm |
| Package 1 width  | 4.300 cm |
| Package 1 Length | 5.200 cm |

## Offer Sustainability

|                            |  |
|----------------------------|--|
| REACH Regulation           | <a href="#">REACH Declaration</a>  |
| REACH free of SVHC         | Yes  |
| EU RoHS Directive          | Pro-active compliance (Product out of EU RoHS legal scope) <a href="#">EU RoHS Declaration</a> |
| Toxic heavy metal free     | Yes  |
| Mercury free               | Yes  |
| RoHS exemption information | <a href="#">Yes</a>  |
| China RoHS Regulation      | <a href="#">China RoHS Declaration</a>   |

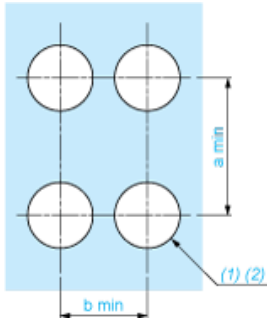
Dimensions



e: Clamping thickness: 1 to 6 mm / 0.04 to 0.24 in.

Panel Cut-out for Pushbuttons, Switches and Pilot Lights (Finished Holes, Ready for Installation)

Connection by Screw Clamp Terminals or Plug-in Connectors



(1) Diameter on finished panel or support

(2)  $\text{Ø}30.75 \text{ mm}$  recommended ( $\text{Ø}30.5 \text{ }_0^{+0.5}$ ) /  $\text{Ø}1.21 \text{ in.}$  recommended ( $\text{Ø}1.20 \text{ in. }_0^{+0.0196}$ )

| Connections                                   | a in mm | a in in. | b in mm | b in in. |
|---|---------|----------|---------|----------|
| By screw clamp terminals or plug-in connector | 40      | 1.57     | 40      | 1.57     |
| By Faston connectors                          | 45      | 1.77     | 40      | 1.57     |

---

Electrical Composition Corresponding to Code C3

---



---

Electrical Composition Corresponding to Code C4

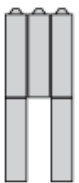
---



---

Electrical Composition Corresponding to Code C5

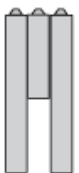
---



---

Electrical Composition Corresponding to Code C6

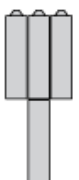
---



---

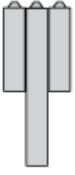
Electrical Composition Corresponding to Code C7

---



## Electrical Composition Corresponding to Code C8

---



## Electrical Composition Corresponding to Codes C9, C11, SF1 and SR1

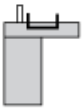
---



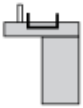
## Electrical Composition Corresponding to Code C15

---

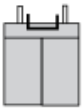
1 N/O



1 N/C



1 N/O + N/C or 1 N/O + N/O or 1 N/C + N/C



## Legend

---

Single contact



Double contact



Light block



Possible location



## Sequence of Contacts Fitted to 2-position Selector Switch Body

### Position 315°



|          |          |        |        |        |      |
|----------|----------|--------|--------|--------|------|
| Push     | Position | Top    |        |        |      |
| Bottom   | ▲        | ▲      | ▲      |        |      |
| Location |          | Left   | Centre | Right  |      |
| State    |          | 0      | 0      | 0      |      |
| Contacts | N/O      |        | open   | open   | open |
| N/C      |          | closed | closed | closed |      |

### Position 45°



|          |          |      |        |        |        |
|----------|----------|------|--------|--------|--------|
| Push     | Position | Top  |        |        |        |
| Bottom   |          |      |        |        |        |
| Location |          | Left | Centre | Right  |        |
| State    |          | 1    | 1      | 1      |        |
| Contacts | N/O      |      | closed | closed | closed |
| N/C      |          | open | open   | open   |        |