



Main

| | |
|---|-------------------------------|
| Range of product | Harmony K |
| Product or component type | Cam switch body |
| Component name | K1 |
| [Ith] conventional free air thermal current | 12 A |
| Sub-assembly composition | Contact blocks + fixing plate |
| Cam switch function | Stepping switch |
| Off position | Without Off position |
| Poles description | 2P |
| Switching positions | Right: 0° - 45° - 90° - 135° |
| Mounting location | Front |
| Fixing mode | Ø 22 mm hole |
| Bezel material | Metal |

Complementary

| | |
|--|--|
| Number of steps | 4 |
| Switching angle | 45 ° |
| [Ui] rated insulation voltage | 690 V (pollution degree 3) conforming to IEC 60947-1 |
| [Ithe] conventional enclosed thermal current | 10 A |
| Rated operational power in W | 10500 W AC-21, 500 - 660 V 3 phases conforming to IEC 947-3 1100 W AC-3, 230 V 3 phases conforming to IEC 947-3 1500 W AC-23A, 230 V 3 phases conforming to IEC 947-3 1500 W AC-3, 400 V 1 phase conforming to IEC 947-3 1500 W AC-3, 400 V 3 phases conforming to IEC 947-3 1500 W AC-3, 500 V 3 phases conforming to IEC 947-3 1500 W AC-3, 690 V 3 phases conforming to IEC 947-3 2200 W AC-23A, 400 V 3 phases conforming to IEC 947-3 2200 W AC-23A, 500 V 3 phases conforming to IEC 947-3 2200 W AC-23A, 690 V 3 phases conforming to IEC 947-3 4800 W AC-21, 230 V 3 phases conforming to IEC 947-3 600 W AC-3, 230 V 1 phase conforming to IEC 947-3 8300 W AC-21, 400 V 3 phases conforming to IEC 947-3 |
| [Ie] rated operational current AC | 1.8 A at 690 V AC-3 3 phases conforming to IEC 947-3 2.8 A at 500 V AC-3 3 phases conforming to IEC 947-3 2.8 A at 690 V AC-23A 3 phases conforming to IEC 947-3 3.3 A at 400 V AC-3 3 phases conforming to IEC 947-3 3.8 A at 500 V AC-23A 3 phases conforming to IEC 947-3 4.6 A at 230 V AC-3 3 phases conforming to IEC 947-3 4.8 A at 400 V AC-23A 3 phases conforming to IEC 947-3 5.6 A at 230 V AC-23A 3 phases conforming to IEC 947-3 1 A at 500 V AC-15 conforming to IEC 947-5-1 2 A at 400 V AC-15 conforming to IEC 947-5-1 3 A at 230 V AC-15 conforming to IEC 947-5-1 |
| Electrical durability | 1000000 Cycles AC-15 1000000 Cycles AC-21 500000 Cycles AC-23 500000 cycles AC-3 |
| Maximum operating rate | 2.5 Cyc/Mn AC-21 2.5 Cyc/Mn AC-23 2.5 Cyc/Mn AC-3 8.333 cyc/mn AC-15 |
| Short-circuit current | 10000 A |
| Short-circuit protection | 16 A cartridge fuse, type gG |

| | |
|--|---|
| [Uimp] rated impulse withstand voltage | 4 kV in isolating function 6 kV conforming to IEC 947-1 |
| Contact operation | Slow-break |
| Positive opening | With |
| Electrical connection | Captive screw clamp terminals flexible, clamping capacity: 2 x 1.5 mm ² Captive screw clamp terminals solid, clamping capacity: 1 x 2.5 mm ² |
| Mechanical durability | 1000000 cycles |
| Net weight | 0.243 kg |






Environment

| | |
|---------------------------------------|---|
| Standards | EN/IEC 60947-3 for power circuit EN/IEC 60947-5-1 for control circuit CENELEC EN 50013 |
| Product certifications | CSA 240 V 1 hp 1 phase CSA 240 V 3 hp 3 phases 2 -pole(s) UL 240 V 1 hp 3 phases UL 240 V 0.33 hp 1 phase 2 -pole(s) |
| Protective treatment | TC |
| Ambient air temperature for operation | -25...55 °C |
| Ambient air temperature for storage | -40...70 °C |
| Shock resistance | 30 gn conforming to IEC 68-2-27 |
| Vibration resistance | 5 gn conforming to IEC 68-2-6 (f = 10...150 Hz) |

Packing Units

| | |
|------------------------------|----------|
| Unit Type of Package 1 | PCE |
| Number of Units in Package 1 | 1 |
| Package 1 Weight | 254 g |
| Package 1 Height | 6.5 cm |
| Package 1 width | 6.5 cm |
| Package 1 Length | 11 cm |
| Unit Type of Package 2 | S01 |
| Number of Units in Package 2 | 10 |
| Package 2 Weight | 2.768 kg |
| Package 2 Height | 15 cm |
| Package 2 width | 15 cm |
| Package 2 Length | 40 cm |

Offer Sustainability

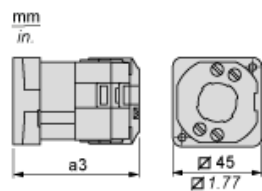
| | |
|----------------------------|--|
| Sustainable offer status | Green Premium product |
| REACH Regulation |  REACH Declaration |
| REACH free of SVHC | Yes |
| EU RoHS Directive | Pro-active compliance (Product out of EU RoHS legal scope)  EU RoHS Declaration |
| Toxic heavy metal free | Yes |
| Mercury free | Yes |
| RoHS exemption information |  Yes |
| China RoHS Regulation |  China RoHS Declaration |
| Environmental Disclosure |  Product Environmental Profile |
| WEEE | The product must be disposed on European Union markets following specific waste collection and never end up in rubbish bins |

Contractual warranty

| | |
|----------|-----------|
| Warranty | 18 months |
|----------|-----------|

Body with Metal Base, Secured by Needle Screws

Front Mounting by Ø 22 mm/0.87 in. Hole

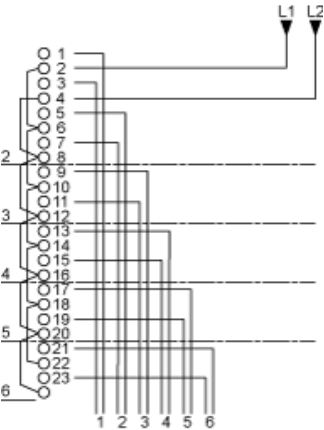


a3 85 mm/3.35 in.

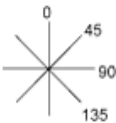
Link Positions (Factory Mounted)

Diagram for 2 to 6-step Stepping Switches

Select the number of steps according to the product characteristics.



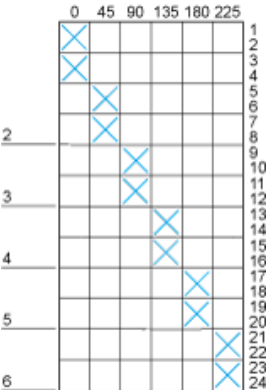
Angular Position of Switch



Switching Program

Diagram for 2 to 6-step Stepping Switches

Select the number of steps according to the product characteristics.



Convention Used for Switching Program Representation

- ☒ Contact closed
- ☒ Contact closed in 2 positions and maintained between the 2 positions
- ☒ Sealed assembly for auto-maintain control



Overlapping contacts



Spring return position: for a switching angle of 90° , spring return is over 30° after the last position (for a maximum of 3 simultaneous contacts).

Example:

