



Main

| | |
|---------------------------|----------------------------|
| Range of product | Harmony GTU |
| Product or component type | Advanced touchscreen panel |
| Terminal type | Touchscreen display |

Complementary

| | |
|---------------------------|----------------------------------|
| Pixel resolution | 1280 x 800 |
| Touchscreen resolution | 1024 x 1024 |
| [Us] rated supply voltage | 12...24 V DC power supply |
| Supply voltage limits | 10.8...28.8 V |
| Power consumption in W | 6.5 W |
| Display size | 10.1 inch |
| Display type | Colour TFT LCD |
| Display resolution | 1280 x 800 pixels WVGA |
| Display colour | 262144 colors |
| Backlight lifespan | 50000 hours |
| Touch panel | Single touch analogue resistive |
| Type of installation | Indoor installation |
| Type of cooling | Natural convection |
| Inrush current | 30 A |
| Cut-out dimensions | 255 (+ 1/- 0) x 185 (+ 1/- 0) mm |
| Width | 268.5 mm |
| Height | 198.5 mm |
| Depth | 67 mm |
| Net weight | 2.5 kg |

Environment







| | |
|---------------------------------------|---|
| IP degree of protection | Front panel: IP66 Front panel: IP67 |
| NEMA degree of protection | NEMA 4X front panel |
| Standards | UL 508 ANSI/ISA 12-12-01 Class I division 2 CSA C22.2 No 213 CSA C22.2 No 142 IEC 61132-2 |
| Product certifications | RCM CULus KC CE |
| Ambient air temperature for operation | 0...60 °C conforming to EN 61131-2 |
| Ambient air temperature for storage | -20...60 °C |
| Pollution degree | 2 |

| | |
|-------------------------------|---|
| Relative humidity | 10...90 % non-condensing |
| Operating altitude | 2000 m |
| Vibration resistance | 3.5 mm constant amplitude (f = 5...9 Hz) conforming to EN/IEC 61131-2 9.8 m/s ² (f = 9...150 Hz) conforming to EN/IEC 61131-2 |
| Shock resistance | 147 m/s ² conforming to EN/IEC 61131-2 |
| Electromagnetic compatibility | Electrostatic discharge immunity test level 3 conforming to EN/IEC 61000-4-2 |

Packing Units

| | |
|------------------------------|----------|
| Unit Type of Package 1 | PCE |
| Number of Units in Package 1 | 1 |
| Package 1 Weight | 9.15 kg |
| Package 1 Height | 19 cm |
| Package 1 width | 37.5 cm |
| Package 1 Length | 33.5 cm |
| Unit Type of Package 2 | BB1 |
| Number of Units in Package 2 | 2 |
| Package 2 Weight | 9.092 kg |
| Package 2 Height | 35.5 cm |
| Package 2 width | 42 cm |
| Package 2 Length | 45.5 cm |
| Unit Type of Package 3 | P12 |
| Number of Units in Package 3 | 20 |
| Package 3 Weight | 80.92 kg |
| Package 3 Height | 100 cm |
| Package 3 width | 80 cm |
| Package 3 Length | 120 cm |

Offer Sustainability

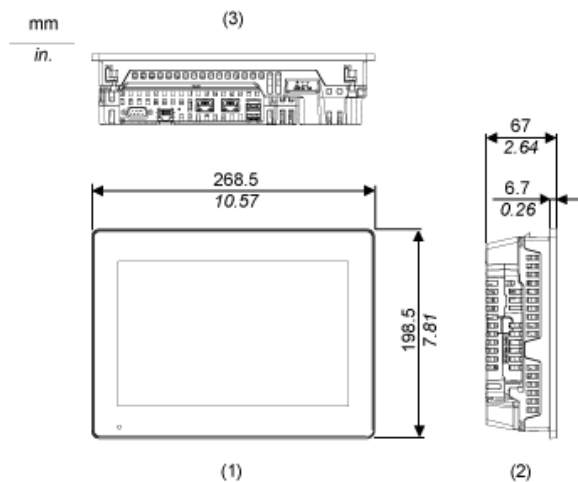
| | |
|----------------------------|--|
| Sustainable offer status | Green Premium product |
| REACH Regulation |  REACH Declaration |
| REACH free of SVHC | Yes |
| EU RoHS Directive | Pro-active compliance (Product out of EU RoHS legal scope)  EU RoHS Declaration |
| Mercury free | Yes |
| RoHS exemption information |  Yes |
| China RoHS Regulation |  China RoHS Declaration |
| Environmental Disclosure |  Product Environmental Profile |
| Circularity Profile |  End Of Life Information |
| WEEE | The product must be disposed on European Union markets following specific waste collection and never end up in rubbish bins |

Contractual warranty

| | |
|----------|-----------|
| Warranty | 18 months |
|----------|-----------|

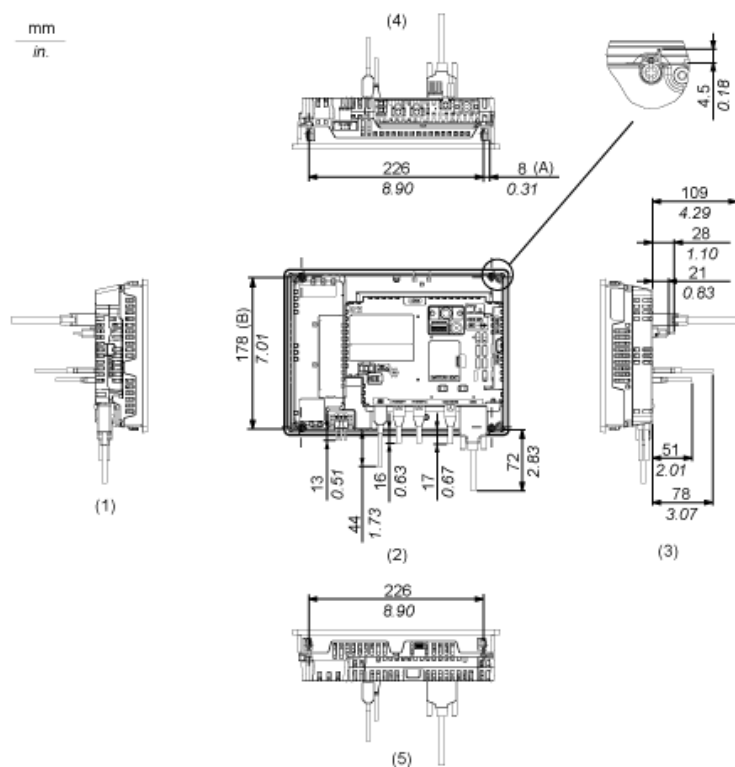
External Dimensions

Display Unit with Box Module



- 1 Front
- 2 Left
- 3 Bottom

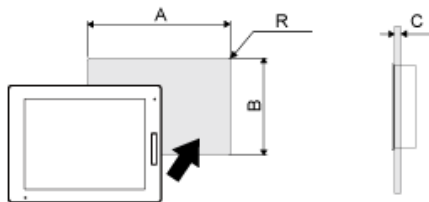
Installation with Installation Fasteners and Dimensions with Cables



- (A) Rotation area of the fastener
- (B) Pitch of the center of installation fastner screws
- 1 Right
- 2 Front
- 3 Left
- 4 Bottom
- 5 Top

Mounting

Panel Cut Dimensions



Dimensions in mm

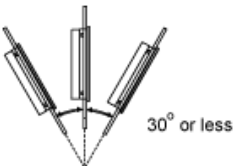
| A | B | C | R |
|-------------|-------------|---------|--------|
| 255 (+1/-0) | 185 (+1/-0) | 1.6...5 | 3 max. |

Dimensions in in.

| A | B | C | R |
|------------------|-----------------|------------|-----------|
| 10.04 (+0.04/-0) | 7.28 (+0.04/-0) | 0.06...0.2 | 0.12 max. |

Installation Requirements

Mounting Angle



When installing this product in a slanted position with an incline more than 30°, the ambient temperature must not exceed 40 °C (104 °F). You may need to use forced air cooling (fan, A/C) to ensure the ambient operating temperature is 40 °C or less (104 °F or less).

Clearance

